



**42' ft. Balcony**  
**50 mtrs. - New Race Course**

**4 BHK**  
**APARTMENTS**

**ARISE III**  
**P U R E**  
**L U X U R Y**

# Living and Dining



ARISE III  
P U R E  
L U X U R Y

# Bathroom One



Bathrooms By **KOHLER**

Master Bathroom with a View

ARISE III  
P U R R E  
L U X B Y



# Bathroom Two



Luxury Bathing

Walk-in Wardrobes

ARISE III  
P U R E  
L U X R Y

# Bathroom Three



360° Luxury in Bathing

ARISE III  
P U R E  
L U X R Y

# Bathroom Four



All Bathrooms with  
**Bath-Tubs**

ARISE III  
P U R E  
L U X R Y



Two Allotted Car-Parks

Floor to Ceiling Slim Series Windows with

Standing **Balconies** in all Rooms

Ceiling Height at **10 ft.**

Door Heights at **8 ft.**

ARISE III

P U R  
L U X R Y





ARISE III

P U R E  
L U X U R Y





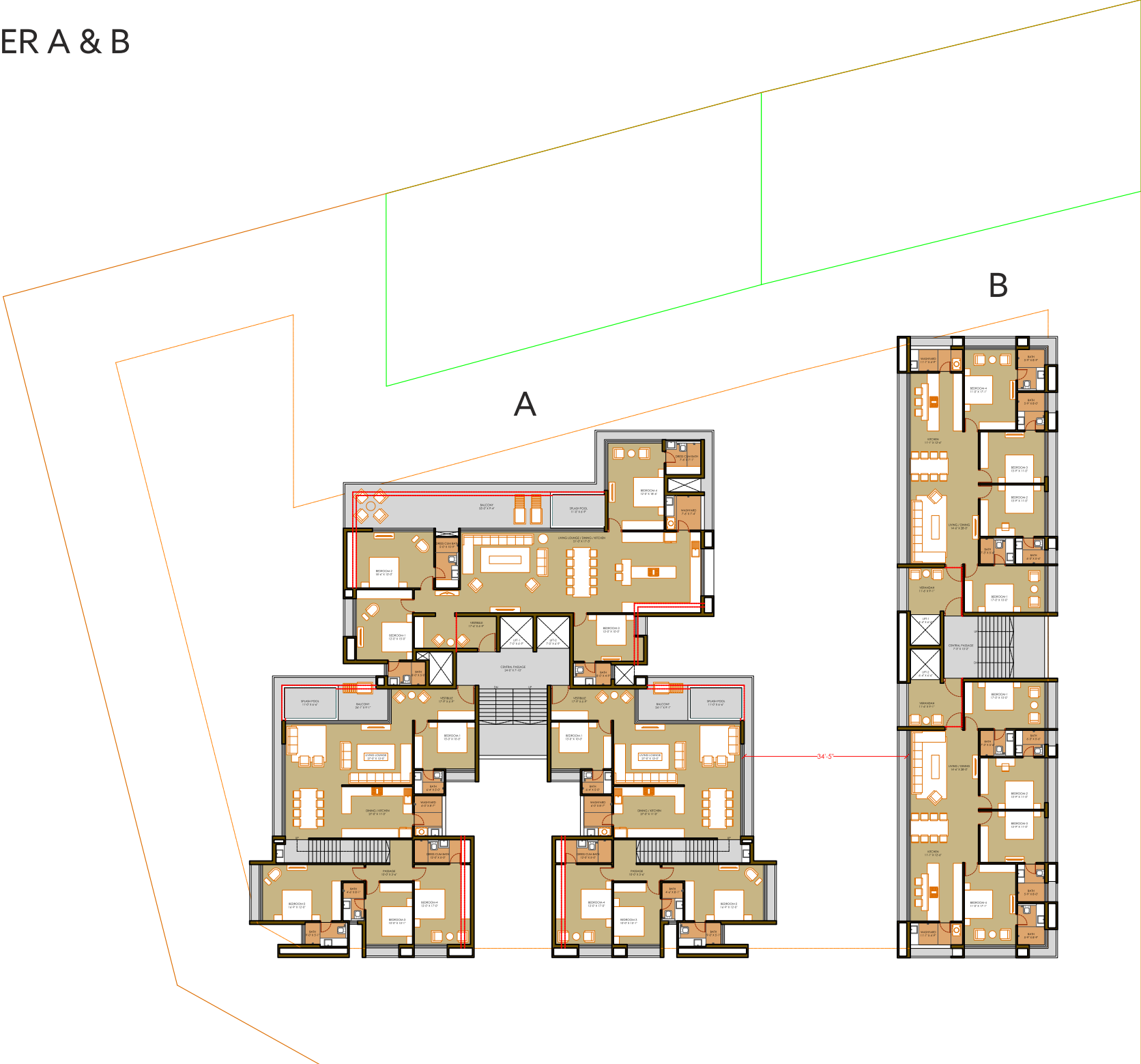
ARISE III  
P U R E  
L U X U R Y





ARISE III  
P U R E  
L U X U R Y

# TOWER A & B





# TOWER - A 101



# ARISE III

P U L X R Y  
L U X R Y

# TOWER - A 102



# ARISE III

P U R  
L U X R Y



TOWER - A 103

ARISE III  
 P U L X R Y



Tower A  
703-903-1103  
Upper Level



Tower A  
703-903-1103  
Lower Level



# Tower B 101

# ARISE III

P U R  
L U X R Y





# Tower B 102

# ARISE III

P U R  
L U X R E Y



## *A Dream, Realized*

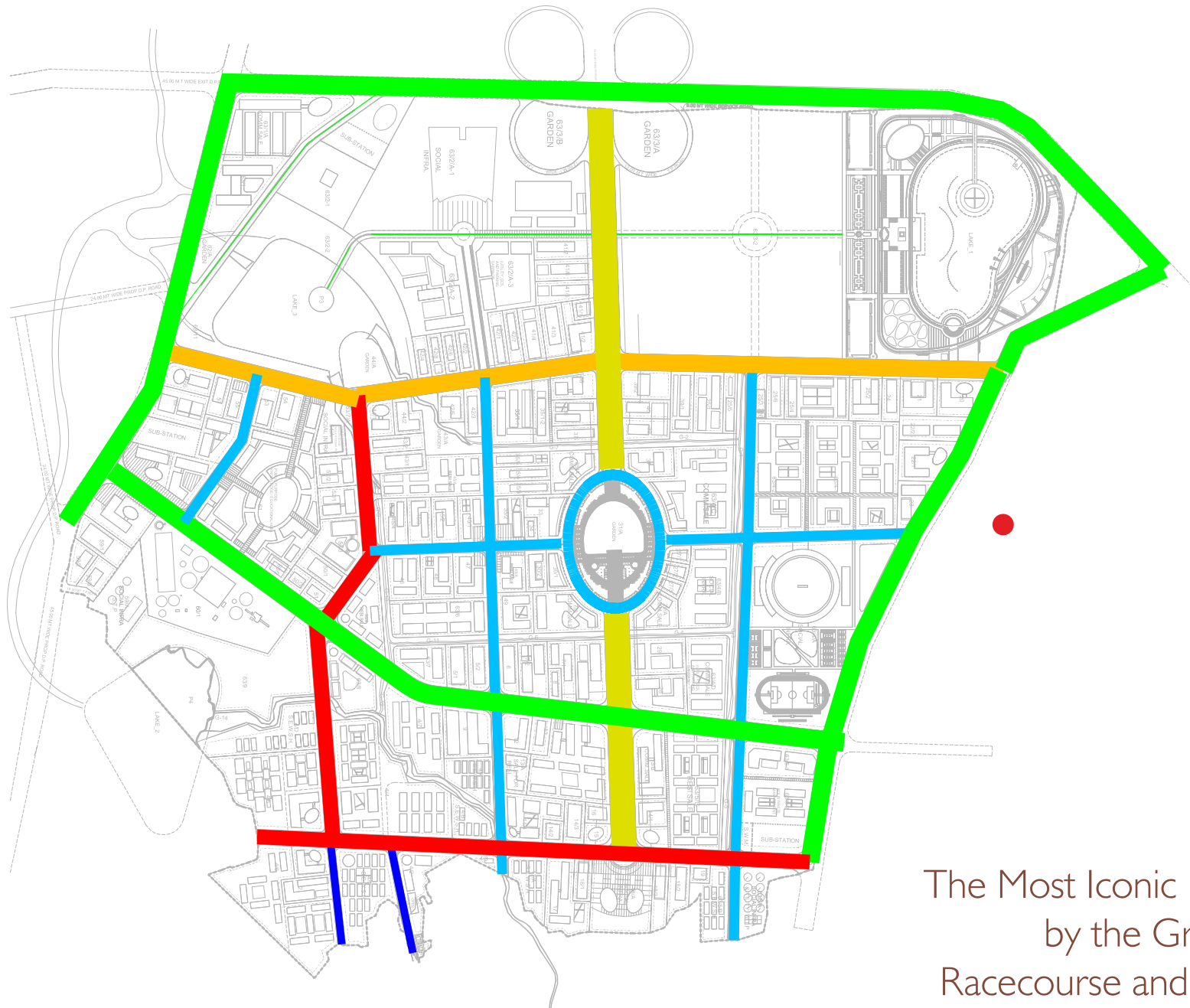
BREATHING LIFE TO THE MOST ICONIC RESIDENTIAL TOWER BY THE GRAND NEW RACECOURSE AND THE ATAL SAROVAR, THESE RESIDENCES REPRESENT A ONCE IN A LIFE TIME OPPORTUNITY TO TAKE PART IN THIS BREATHTAKINGLY DESIGNED PROPERTY BY BRIJ PATEL.

THE ARISE III IS A REMARKABLE CREATIVE COLLABORATION WHOSE QUALITY IS PALPABLE INSIDE AND OUT, THE PENTHOUSES MELD PALLADIAN-PROPORTIONED ROOMS WITH THE HIGHEST ENGINEERING TECHNOLOGY, THE MOST EXQUISITE MATERIALS AND VERSATILE PLANNING. SOARING HIGH ABOVE THE 936 ACRES GRAND NEW RACECOURSE/SMART CITY WITH AWE-INSPIRING VIEWS OF THE CITY SKYLINE ACROSS THE ATAL SAROVAR.

WITH THE GRAND NEW RECECOURSE/SMART CITY DESTINED TO BE THE BEST DISTRICT IN THE ENTIRITY OF GUJARAT, OWING TO WORLD CLASS ROAD NETWORKS AND RIVER FRONT INTERSECTIONS LIKE NONE OTHER, ALL WITHIN THE LIMITS OF RAJKOT MUNICIPAL CORPORATION, ARISE III IS A CALL TO RISE AND SECURE YOUR CORNER IN THE UNIVERSE.

# ARISE III

P U R  
L U X R E Y



- 60m Road
- 45m Road
- 40m Road
- 36m Road
- 24m Road
- 18m Road

The Most Iconic Residential Tower  
by the Grand New  
Racecourse and the Atal Sarovar

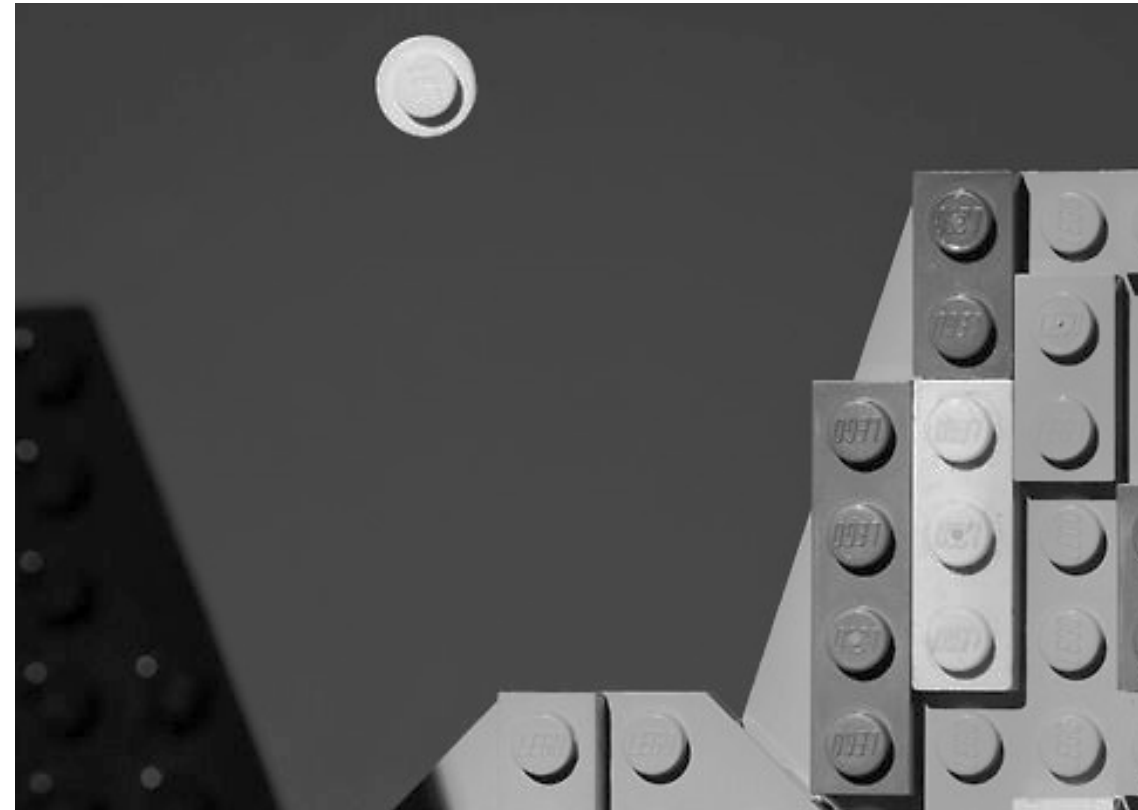


# ARISE III

P U R E  
L U X R Y

THE MOST RIGHTLY PRICED PROPERTY MARKET THAT IS DESTINED TO BECOME  
THE MOST EXPENSIVE LOCALITY IN THE CITY.

OWING TO THE DEVELOPMENT OF  
THE ATAL SAROVAR, THE GRAND NEW RACECOURSE AND  
THE WIDEST RIVER FRONT ROADS ALL WITHIN  
THE CITY LIMITS AND A TIME FRAME OF TWO YEARS,  
THE RISING IS DESTINED TO BECOME ONE OF  
THE MOST EXPENSIVE PROPERTIES IN TOWN.



### Indulge in True Luxury of 7 star Amenities

- Panoramic Views of Atal Sarovar & New Race Course
- Roof Top - Lounge
- Gymnasium
- Games Room
- Dolby Atmos Cinema
- Air Conditioned Reception Lobby
- Tennis court

### 360° Luxury in every corner of your Apartment

- Two Allotted Car-Parks
- Luxury Bathing
- Bath Tubs in all Bathrooms
- Master bathroom with a View
- Walk-in Wardrobes
- Floor to Ceiling Slim Series Windows with Standing Balconies in all Rooms.
- Ceiling Height at 10 ft.
- Door Heights at 8 ft.

### Our TOP TIER Vendors

floors by **AGL** | Bathrooms by **KOHLER** | Electricals by **SCHNEIDER Germany**

Wires by **LAPP Germany** | Pipes/Plumbing by **ASTRAL**

# ARISE III

P U R E  
L U X U R Y

# ARISE III

P U R E  
L U X U R Y

Project By

ARISE  
P U R E  
L U X U R Y

applied  ideas  
PVT. LTD.  
7 0 4 6 0 3 3 3 0

Architecture & Design

**BRIDGE STUDIO**  
ARCHITECT, INTERIOR & LANDSCAPE DESIGNER

Engineers

**KRAPA**  
Structural Consultants