



the RISING ONE
PENTHOUSES

the RISING ONE
PENTHOUSES

Private Pool Luxury
180° Floor to Ceiling Glass Doors
4 Bhk Duplex + Out Door Patio



the RISING ONE
PENTHOUSES

End to End Glass Facade
Breathtaking Views Throughout
The Property



the RISING ONE
PENTHOUSES

Sky Lounge Over Looking
The City Skyline Across
The Grand New Racecourse &
The Atal Sarovar



the RISING ONE
PENTHOUSES

Eleven+ Feet Ceiling Height
Inspired by
the PALLADIAN way of
ARCHITECTURE



the RISING ONE
PENTHOUSES

Intrinsic Joys of Watching
the World go by
as You Bathe in Grand Luxury



the RISING ONE
PENTHOUSES

A Dream, Realized

BREATHING LIFE TO THE MOST ICONIC RESIDENTIAL TOWER BY THE GRAND NEW RACECOURSE AND THE ATAL SAROVAR, THESE RESIDENCES REPRESENT A ONCE IN A LIFE TIME OPPORTUNITY TO TAKE PART IN THIS BREATHTAKINGLY DESIGNED PROPERTY BY BRIJ PATEL.

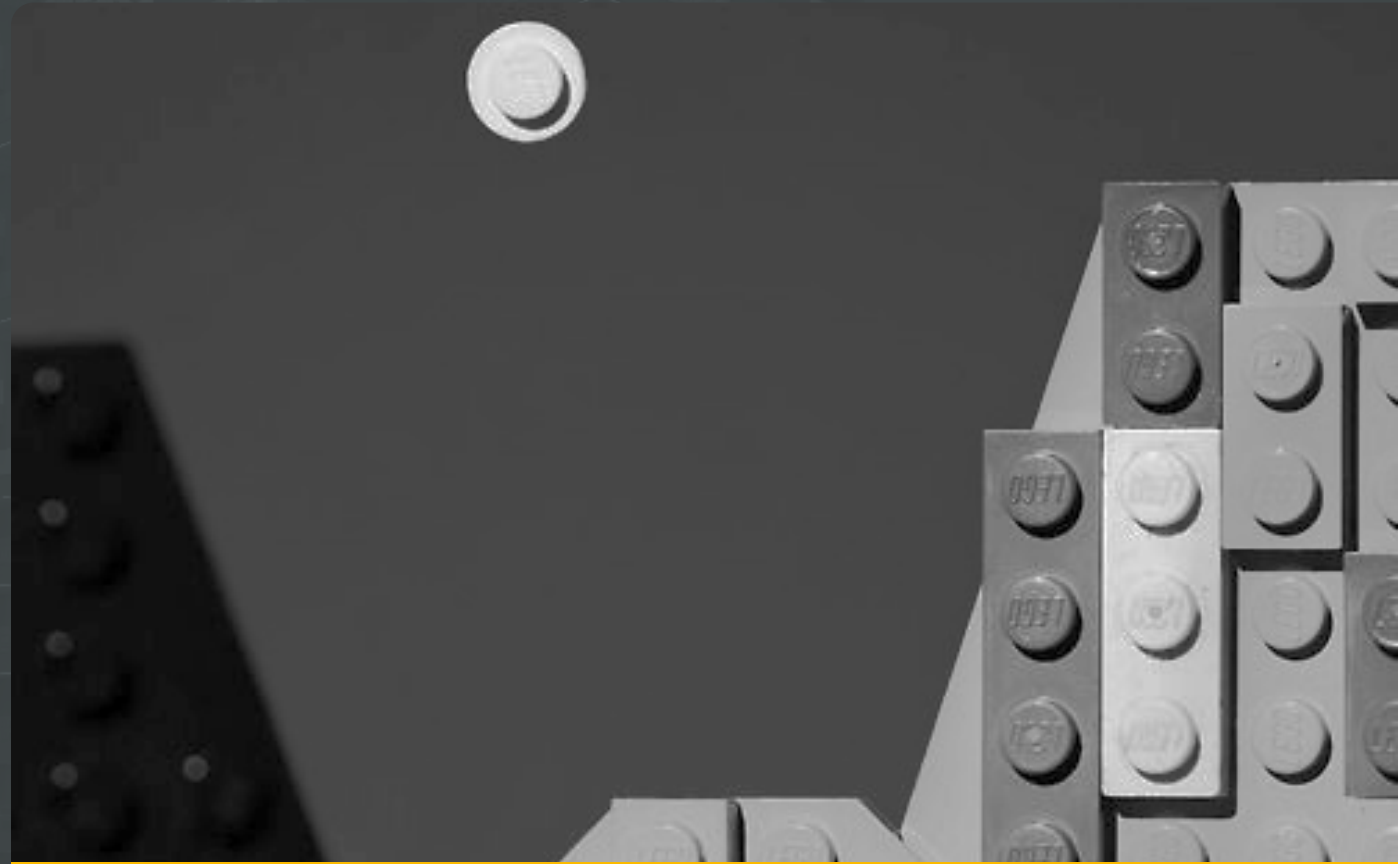
THE RISING IS A REMARKABLE CREATIVE COLLABORATION WHOSE QUALITY IS PALPABLE INSIDE AND OUT, THE PENTHOUSES MELD PALLADIAN-PROPORTIONED ROOMS WITH THE HIGHEST ENGINEERING TECHNOLOGY, THE MOST EXQUISITE MATERIALS AND VERSATILE PLANNING. SOARING HIGH ABOVE THE 936 ACRES GRAND NEW RACECOURSE/SMART CITY WITH AWE-INSPIRING VIEWS OF THE CITY SKYLINE ACROSS THE ATAL SAROVAR.

WITH THE GRAND NEW RACECOURSE/SMART CITY DESTINED TO BE THE BEST DISTRICT IN THE ENTIRETY OF GUJARAT, OWING TO WORLD CLASS ROAD NETWORKS AND RIVER FRONT INTERSECTIONS LIKE NONE OTHER, ALL WITHIN THE LIMITS OF RAJKOT MUNICIPAL CORPORATION, THE RISING IS A CALL TO RISE AND SECURE YOUR CORNER IN THE UNIVERSE.

the RISING ONE PENTHOUSES

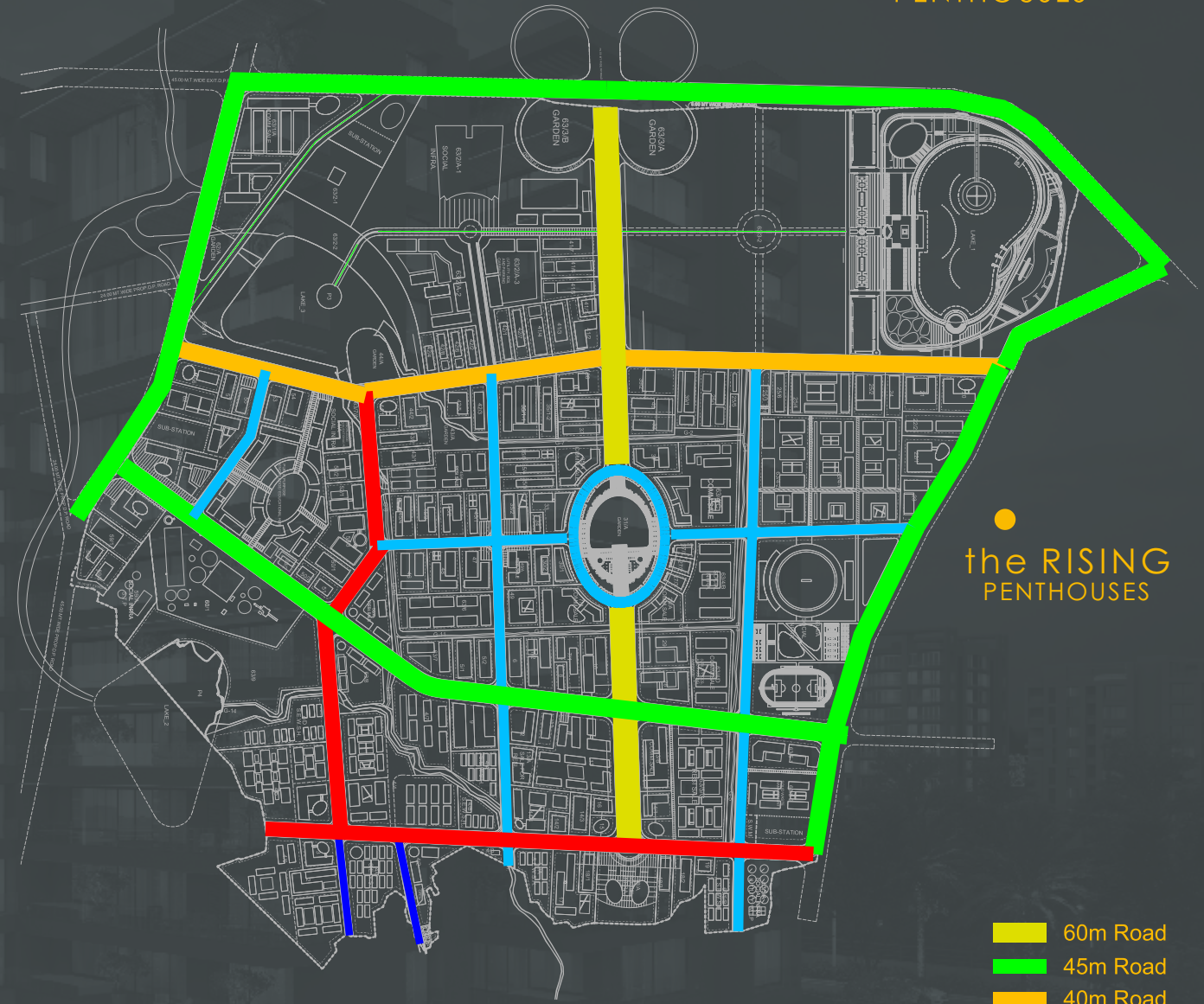
THE MOST RIGHTLY PRICED PROPERTY MARKET
THAT IS DESTINED TO BECOME
THE MOST EXPENSIVE LOCALITY IN THE CITY.

OWING TO THE DEVELOPMENT OF
THE ATAL SAROVAR, THE GRAND NEW RACECOURSE AND
THE WIDEST RIVER FRONT ROADS ALL WITHIN
THE CITY LIMITS AND A TIME FRAME OF TWO YEARS,
THE RISING IS DESTINED TO BECOME ONE OF
THE MOST EXPENSIVE PROPERTIES IN TOWN.



the RISING ONE PENTHOUSES

The Most Iconic Residential Tower
by the Grand New
Racecourse and the Atal Sarovar



● the RISING
PENTHOUSES

- 60m Road
- 45m Road
- 40m Road
- 36m Road
- 24m Road
- 18m Road

the RISING ONE PENTHOUSES

THE RESIDENCES AT THE RISING ARE COMPLEMENTED
BY OVER 5000 SQUARE FEET OF ROOF TOP
AMENITIES PROVIDING HIGHLY PERSONALIZED AND
EXACTING SERVICES TO EACH RESIDENT.

AMENITIES INCLUDE
ROOFTOP LOUNGE
FITNESS CENTER
SCREENING ROOM
BOARDROOM
BILLIARDS ROOM AND LIBRARY
PRIVATE DRIVEWAY
2 ALLOTTED CAR PARKS PER PENTHOUSE
24 HOUR DOORMAN
SOLAR POWER GRID TO
NEUTRALIZE COMMON ELECTRIC CONSUMPTION



the RISING ONE PENTHOUSES

BUILDING

LOCATION: OFF THE RACECOURSE BOULEVARD, NR ATAL SAROVAR.

DESIGN ARCHITECT: BRIJ PATEL

INTERIOR ARCHITECT: BRIDGE STUDIOS

RESIDENTIAL SERVICES

24 HOUR DOORMAN

PRIVATE DRIVEWAY

TWO ALLOTTED CAR PARKS

ELECTRIC CAR CHARGING POINTS WITHIN THE GARAGE

SOLAR POWER GRID TO NEUTRALIZE COMMON POWER CONSUMPTION

AMENITIES

TWO CLUB HOUSES

CLUB I

ROOFTOP LOUNGE WITH A POOL

ROOFTOP FITNESS CENTER WITH AN ATTACHED OUTDOOR LOUNGE

CLUB II

SCREENING ROOM

BOARD ROOM

BILLIARD ROOM & LIBRARY

RESIDENCES

11+ FEET' FLOOR TO FLOOR HEIGHT

8' FULL HEIGHTED DOORS

COLUMN FREE LAYOUTS

FLOOR TO CEILING WINDOWS

TWIN LIVING ROOM SPACES FOR UNPARALLELED GRANDEUR

END TO END CORNERED GLASS FACADE

EN-SUITE MASTER BATHROOMS WITH VIEWS

RESIDENCES WITH GRANDE PRIVATE VESTIBULES

DEDICATED LIFESTYLE SPACE WITH A PRIVATE PLUNGE POOL

WOODEN FLOORS ACROSS MASTER BEDROOMS

IP 68 RATED VOICE ACTIVATED MUSIC SYSTEM IN MASTER BATHROOMS & OUT DOOR PATIO

SEAMLESSLY INTERMINGLING INDOOR AND OUTDOOR SPACES

INTEGRATED OUT DOOR PATIO WITH A PLUNGE POOL

GRAND LUXURY OF OUTDOOR LIVING INTEGRATED WITH THE INDOOR SPACES

PROJECT VENDORS

KOHLER - SCHNEIDER - LAPP

ASTRAL - AGL - CENTURY PLY - MONO TMT 500D

ULTRATECH RMC - BALAJI RMC

the RISING ONE PENTHOUSES

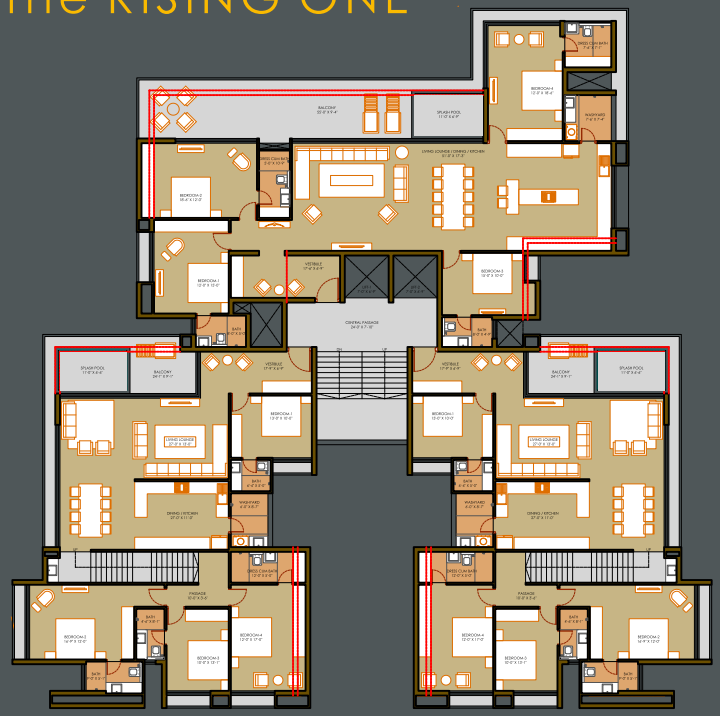


THE PLAN

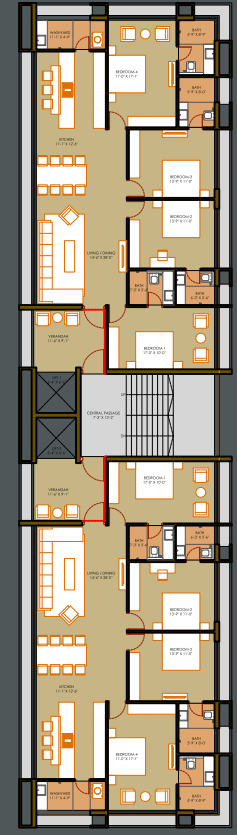


the RISING ONE
PENTHOUSES

the RISING ONE



ARISE III



THE LAYOUT

the RISING ONE
PENTHOUSES



the RISING ONE PENTHOUSES

Project By

ARISE
PURE LUXURY

applied **deas**
REALTY

Architecture & Design



Engineers

